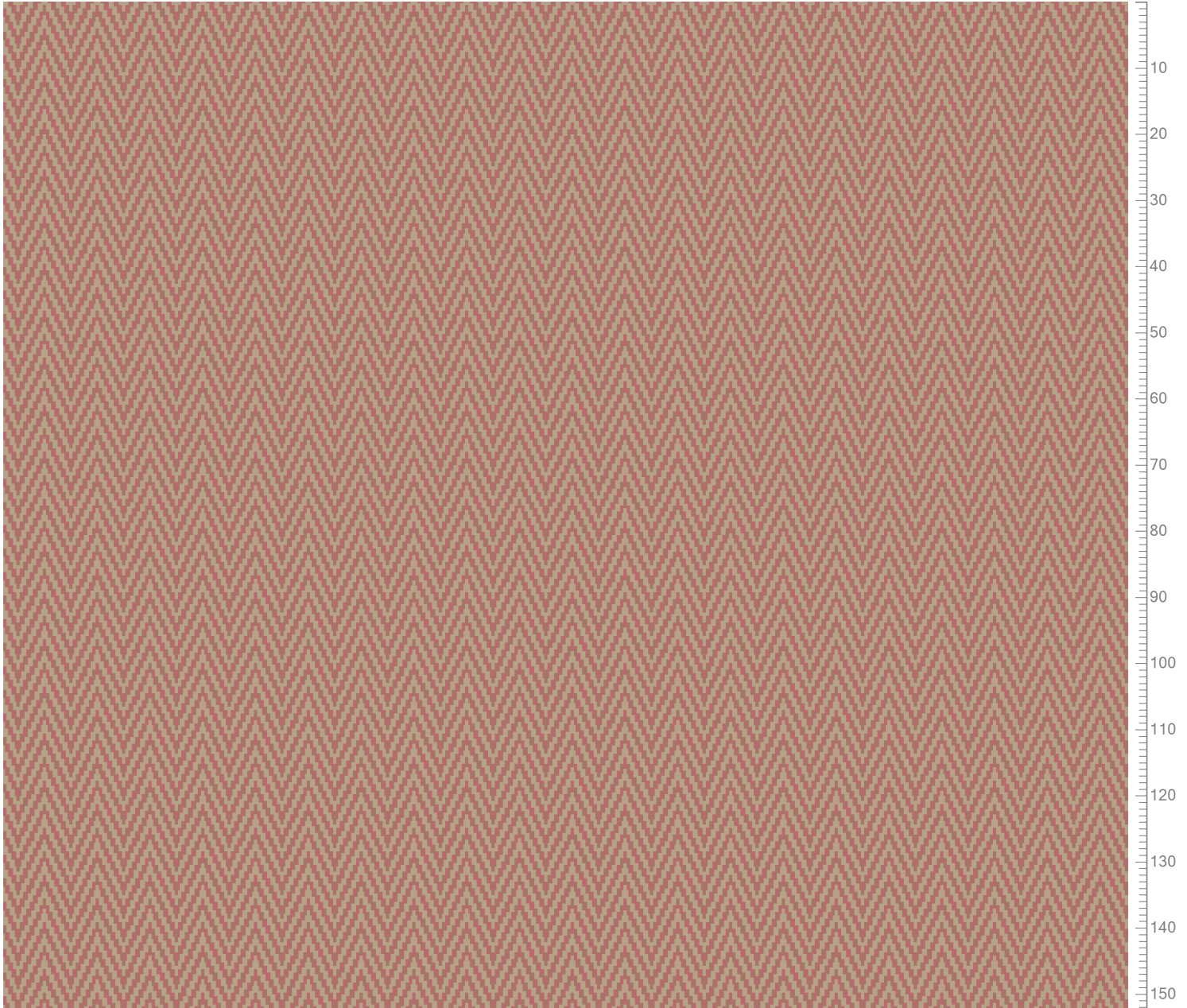


ege	Sku No		Project		Quality	DB	Country
	5575214		herringbone rose			DB10-5504	DK
	Design	Version			Repeat type	Width	Length
	EF80432	13			2-ROOMREPEAT	16.3	7.1
	Design ref.	Colors					
ESSENTIALS	5575						
						Base no.	Mod. inst.
						0	
LYKKE			overlock yarn 0620410 Previous RF52754914				
Design created by: hlj Date: 29-SEP-2017							
Sku MODIFIED by: hlj Date: 15-AUG-2019							



Repeat: X=16.3cm Y=7.1cm (Size Shown: X=173.23cm Y=152.53cm)

Page 1 / 2		K28328	K28329	K28378	K28374	K28366	K28364	K28380	K28379	K27886	K28360	K28367	K28368
EF80432-13		5575-BC1	5575-BC2	5575-BC3	5575-BC4	5575-BC5	5575-BC6	5575-BC7	5575-BC8	5575-BC9	5575-BC10	5575-BC11	5575-BC12
5575		1	2	3	4	5	6	7	8	9	10	11	12
Color Categorization		0	0	0	0	0	0	0	0	0	0	0	0
Wet Factor: 109.7%		35.8%	38.2%								35.6%		
1	25.45%										100		
2	25.45%		73								40		
3	49.11%	73	40										

Colors are approximation only. Physical sample must be approved for ordering.

Copyright: egetaepper a/s - Lykke